



Ola H75 M Stool

design Paolo Vernier, 2016

Ola stool with laquered metal frame and shell, suitable for outdoor use.

It is stackable up to four units.

Height: 75 cm

Colors and Materials

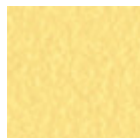
Structure



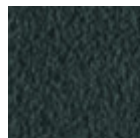
White steel



Sand steel



Pastel yellow steel



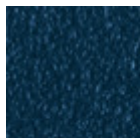
Grafite metal



Black steel



Light blue metal



Ocean blue steel



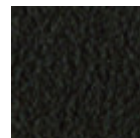
Bronze metal



Fango steel



Light grey steel



Brown steel



Ocher steel



Facepowder pink metal

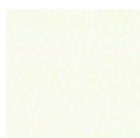


Red steel

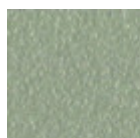


Sage green metal

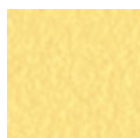
Coating



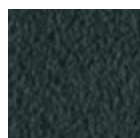
White steel



Sand steel



Pastel yellow steel



Grafite metal



Black steel



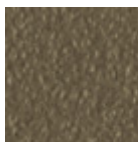
Light blue metal



Ocean blue steel



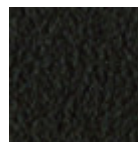
Bronze metal



Fango steel



Light grey steel



Brown steel



Ocher steel



Facepowder pink metal

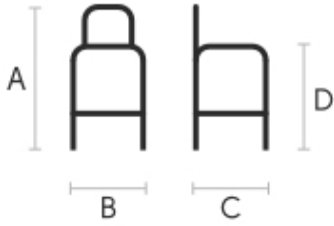


Red steel



Sage green metal

Dimensions



	cm	inch
A	100	39.4
B	50	19.7
C	52	20.1
D	75	29.5

Volumetric Details

Weight 9 Kg

Volume 0.28 mc

Package 1