



# Trampoliere H54 ø50 Coffee Table

design Roberto Paoli, 2013



Trampoliere coffee table with three-star base in metal. Top in melamine or HPL.

Available in three variants: H34 Ø70, H44 Ø60, H54 Ø50.

## Colors and Materials

### Structure



White steel



Black steel



Sand steel



Brown steel



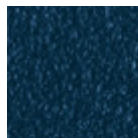
Grafite metal



Pastel yellow steel



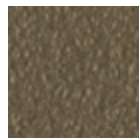
Light blue metal



Ocean blue steel



Bronze metal



Fango steel



Light grey steel



Ocher steel



Facepowder pink metal

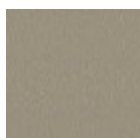


Red steel



Sage green metal

### Coating

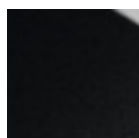


Melamine

8 Colors



White hpl black core



Black hpl



Hpl cemento

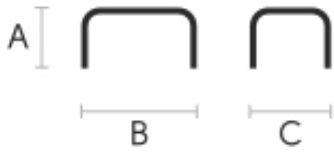


Hpl corten



White hpl white core

## Dimensions



## Volumetric Details

**Weight** 14.5 Kg

**Volume** 0.15 mc

**Package** 2

	<b>A</b> <b>(cm)</b> (inch)	<b>B</b> <b>(cm)</b> (inch)	<b>C</b> <b>(cm)</b> (inch)
<b>Trampoliere</b> <b>H54 (cm)</b> (inch)	54 21.3	50 19.7	50 19.7
<b>Trampoliere</b> <b>H34 (cm)</b> (inch)	34 13.4	70 27.6	70 27.6
<b>Trampoliere</b> <b>H44 (cm)</b> (inch)	44 17.3	60 23.6	60 23.6