



# Liù S M LG\_X Chair

design Archirivolto, 2013

Liù chair on fixed steel trestle. Shell in wood.

## Colors and Materials

### Structure



Papaya orange steel



Light blue metal



White steel



Ocean blue steel



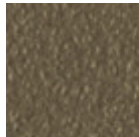
Bronze metal



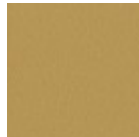
Ash grey metal



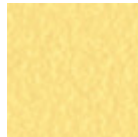
Sand steel



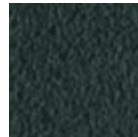
Fango steel



Golden yellow metal



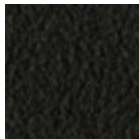
Pastel yellow steel



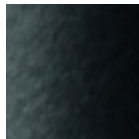
Grafite metal



Light grey steel



Brown steel



Black steel



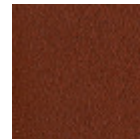
Ocher steel



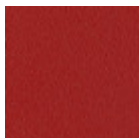
Facepowder pink metal



Red steel



Bulgaro red metal



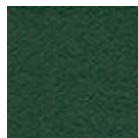
Cherry red metal



Pine green steel



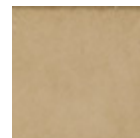
Sage green metal



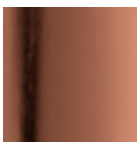
Dark green metal



Golden bronze



Matt golden bronze



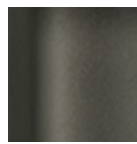
Pink Gold



Golden champagne



Black Nickel

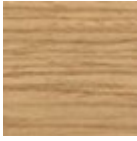


Matt black nickel



Chrome

## Coating



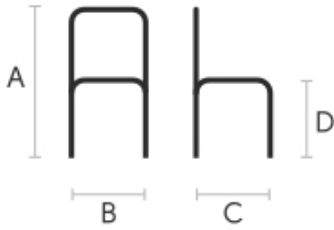
Stained ash veneered

10 Colors



Veneered flamed walnut

## Dimensions



	cm	inch
A	84	33.1
B	48	18.9
C	55	21.7
D	46	18.1

## Volumetric Details

Weight 6 Kg

Volume 0.14 mc

Package 1

## Downloads

[.3ds Liù S M LG\\_X \(zip\)](https://www.midj.com/images/uploads/resources/3d-midj-liu-s-m-lg-x-3ds.zip) - <https://www.midj.com/images/uploads/resources/3d-midj-liu-s-m-lg-x-3ds.zip>

[.dae Liù S M LG\\_X \(zip\)](https://www.midj.com/images/uploads/resources/3d-midj-liu-s-m-lg-x-dae.zip) - <https://www.midj.com/images/uploads/resources/3d-midj-liu-s-m-lg-x-dae.zip>

[.dxf Liù S M LG\\_X \(zip\)](https://www.midj.com/images/uploads/resources/3d-midj-liu-s-m-lg-x-dxf.zip) - <https://www.midj.com/images/uploads/resources/3d-midj-liu-s-m-lg-x-dxf.zip>

[.obj Liù S M LG\\_X \(zip\)](https://www.midj.com/images/uploads/resources/3d-midj-liu-s-m-lg-x-obj.zip) - <https://www.midj.com/images/uploads/resources/3d-midj-liu-s-m-lg-x-obj.zip>

[.stl Liù S M LG\\_X \(zip\)](https://www.midj.com/images/uploads/resources/3d-midj-liu-s-m-lg-x-stl.zip) - <https://www.midj.com/images/uploads/resources/3d-midj-liu-s-m-lg-x-stl.zip>

## Materials Certifications

### Dark green metal

The technologies used in the previous phase of powder coating play a fundamental role in the final result of the processing. They are in fact essential to increase adherence paint on the metal surface and then guarantee its duration over time. The metal frames, following a total cleaning of the surface, pass through chemical conversion processes, creating a compact base that allows for better adhesion of the subsequent treatment. In the last phase the object subjected to the powder coating process is placed in a polymerization oven, going to form an adherent and extremely tight layer durable. This particular paint job is ideal for outdoor use.

To clean the surface, use a damp microfiber cloth with neutral soap or specific metal cleaning products. Avoid hitting or rubbing the surface with sharp objects. Do not use scourers or other abrasive materials, since they would inevitably scratch the surface. Do not leave rusty iron objects on the surface for too long.

These surface treatments are not suitable for outdoor use, but they guarantee excellent resistance to frequent use, dirt and dust.

## Materials Certifications

## **Matt golden bronze**

Galvanic treatments consist in applying a thin layer of a metal or other alloy, in order that properties of the surface are modified, both from a technical and an aesthetic point of view. Through this procedure it is possible to improve specific product features, such as endurance to corrosion.

### **CLEANING AND MAINTENANCE**

To clean the surface, use a damp microfiber cloth with neutral soap or specific metal cleaning products. Avoid hitting or rubbing the surface with sharp objects.

### **GENERAL TIPS**

Do not use scourers or other abrasive materials, since they would inevitably scratch the surface. Do not leave rusty iron objects on the surface for too long. These surface treatments are not recommended for outdoor, naval or seaside use.

---

## **Materials Certifications**

### **Matt black nickel**

Galvanic treatments consist in applying a thin layer of a metal or other alloy, in order that properties of the surface are modified, both from a technical and an aesthetic point of view. Through this procedure it is possible to improve specific product features, such as endurance to corrosion.

### **CLEANING AND MAINTENANCE**

To clean the surface, use a damp microfiber cloth with neutral soap or specific metal cleaning products. Avoid hitting or rubbing the surface with sharp objects.

### **GENERAL TIPS**

Do not use scourers or other abrasive materials, since they would inevitably scratch the surface. Do not leave rusty iron objects on the surface for too long. These surface treatments are not recommended for outdoor, naval or seaside use.

---

## **Materials Certifications**

### **Stained ash veneered**

Veneered woods are the result of a process of gluing extremely thin sheets of wood applied to various types of supports to produce furnishing elements, which have a similar appearance to solid wood, but with better performance in terms of resistance to woodworms, lightness and greater stability over time.

If exposed to light, and in any case with the passage of time, the color of the veneer changes. It may happen that furniture of the same color purchased after some time, show color differences. Upon request, the veneered parts can be supplied with certified origin from forests managed in a correct and responsible manner, according to the rigorous environmental standards established by the FSC circuit.

### **CLEANING AND MAINTENANCE**

For ordinary cleaning of veneered woods, use a cloth moistened with neutral soap well diluted in water or specific products. Always dry after each application with a dry cloth or paper towel. Do not use abrasive products. In case of accidental spills of substances or liquids, immediately dab the wood with paper towel or with a dry and clean cloth. Avoid proximity to heat sources. Evenly expose the veneered woods to light, for example by periodically opening the table extensions that are stored inside the structure, or by moving any object placed on the surface, such as vases and accessories.

These tips are cleaning recommendations and do not guarantee complete stain removal.

We recommend that you always test the cleaning method on a hidden part of the item to check the resistance of the color.

Colour samples are to be considered approximate for each product. Slight color differences between a lot and the other are to be considered normal.

---

## **Materials Certifications**

### **Veneered flamed walnut**

Veneered woods are the result of a process of gluing extremely thin sheets of wood applied to various types of supports to produce furnishing elements, which have a similar appearance to solid wood, but with better performance in terms of resistance to woodworms, lightness and greater stability over time.

If exposed to light, and in any case with the passage of time, the color of the veneer changes. It may happen that furniture of the same color purchased after some time, show color differences. Upon request, the veneered parts can be supplied with certified origin from forests managed in a correct and responsible manner, according to the rigorous environmental standards established by the FSC circuit.

#### CLEANING AND MAINTENANCE

For ordinary cleaning of veneered woods, use a cloth moistened with neutral soap well diluted in water or specific products. Always dry after each application with a dry cloth or paper towel. Do not use abrasive products. In case of accidental spills of substances or liquids, immediately dab the wood with paper towel or with a dry and clean cloth. Avoid proximity to heat sources. Evenly expose the veneered woods to light, for example by periodically opening the table extensions that are stored inside the structure, or by moving any object placed on the surface, such as vases and accessories.

These tips are cleaning recommendations and do not guarantee complete stain removal.

We recommend that you always test the cleaning method on a hidden part of the item to check the resistance of the color.

Colour samples are to be considered approximate for each product. Slight color differences between a lot and the other are to be considered normal.