



# Ola CT 105 Coffee Table

design Paolo Vernier, 2016

Ola coffee table with legs and top in lacquered metal or with industrial effect.

Suitable for outdoor use.

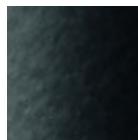


## Colors and Materials

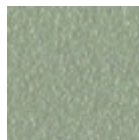
### Structure



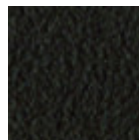
White steel



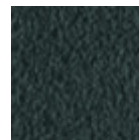
Black steel



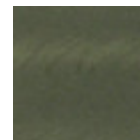
Sand steel



Brown steel



Grafite metal

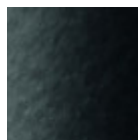


Industrial steel

### Coating



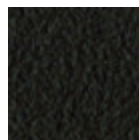
White steel



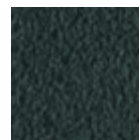
Black steel



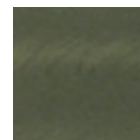
Sand steel



Brown steel

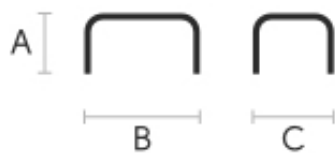


Grafite metal



Industrial steel

## Dimensions



	A (cm)	B (cm)	C (cm)
	(inch)	(inch)	(inch)
Ola CT	50	105	44
105 (cm)	19.7	41.3	17.3
	(inch)		

	<b>A (cm)</b>	<b>B (cm)</b>	<b>C (cm)</b>
	(inch)	(inch)	(inch)
<b>Ola CT 45</b>	50	45	44
<b>(cm)</b>	19.7	17.7	17.3
<b>(inch)</b>			

---

## Volumetric Details

**Weight** 10 Kg

**Volume** 0.24 mc

**Package** 1

---

## Downloads

[.3ds Ola CT 105 \(zip\)](https://www.midj.com/images/uploads/resources/3d-midj-ola-ct-105-3ds.zip) - <https://www.midj.com/images/uploads/resources/3d-midj-ola-ct-105-3ds.zip>